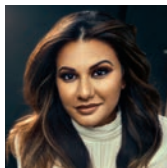




MINDFUL DESIGN

TWO L.A. DESIGNERS SHARE THEIR TIPS FOR AN ELEVATED APPROACH TO SUSTAINABLE DESIGN.

WRITTEN BY CLÉMENTINE SFADJ



Rydhima Brar A LUXE Next In Design 99 honoree, Brar melds Middle East and West Coast sensibilities to create a contemporary style with global influences. Here, the R/terior Studio principal shares how sustainability plays into that mix.

RB: "There is so much to learn when it comes to this topic, from using carpeting or drapery as insulators in a home to bamboo flooring options to working with locally sourced materials. Two brands on my radar are ecoBirdy, which makes furniture from recycled plastic toys, and Vetrazzo slabs that are made of 100% recycled glass." rteriorstudio.com



Leah Ring With design firm Another Human, Ring aims to create layered yet functional spaces that "look better once they're lived in." The LUXE Next In Design 99 talent tells us how she makes this motto

a reality. **LR:** "We address sustainability by guiding our clients to avoid design trends—so they don't feel a desire to replace items every few years—and specifying high-quality, often locally manufactured goods. If the materials are elevated and the space is a unique reflection of them, they could live with the same finishes and pieces for decades to come." anotherhuman.la



See our Next In Design 99

INSIDER

KATHRYN M. IRELAND

To celebrate her firm's 30th anniversary, Kathryn M. Ireland has launched a line of Silk Road-inspired textiles named Jewels of the East and published *Kathryn M. Ireland: A Life in Design*, a new monograph. Here, she reflects on Southern California design. kathrynireland.com

How has SoCal changed, stylistically? My clients' homes are now more about family and pets. And exterior spaces have become as important as the interiors. **What neighborhood still captivates you?** The Westside. I'm always searching for that unspoiled 1920s Spanish home. I also like modernizing industrial spaces for families or empty nesters. **Share some career highlights.** Wallace Neff and George Washington Smith projects in Ojai. Building from the ground up with Marc Appleton and Marmol Radziner, and working on gardens with Stephen Block and Art Luna. I've collaborated with the greatest craftsmen in this region. With always more chapters to come!



MINDFUL DESIGN: RYDHIMA BRAR PORTRAIT, CHRIS KNIGHT PHOTOGRAPHY; R/TERIOR STUDIO INTERIOR PHOTO (TOP), JESS ISAAC; LEAH RING PORTRAIT, MAGGIE SHANNON; ANOTHER HUMAN INTERIOR PHOTO (BOTTOM), JAMES ELLIOT BAILEY. INSIDER: TEXTILES PHOTO, JON HUGSTAD; INTERIOR PHOTO, JAMES MERRELL.